

bergo[®]
FLOORING

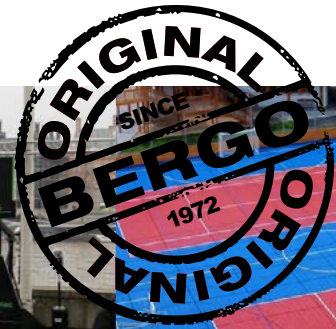
WORLD LEADER IN
MULTIFUNCTIONAL
FLOOR TILES



ECO-FRIENDLY

BERGO SPORTS FLOORING

THE ORIGINAL SINCE 1972



BERGO MULTISPORT



**MEETS THE FIBA
STANDARDS AND
ITF-CERTIFICATE**

**EASY TO
INSTALL**

**MINIMAL
MAINTENANCE**



When evaluating a flooring for your premises or for a specific event, you have to consider factors such as: suitable surface for the specific sport, maintenance, installation, removal, durability, environmental impact and appearance. BERGO SPORTS FLOORING offer a high performance level considering all these factors. Fitting the floor yourself could not be easier, that's another big advantage. BERGO is an interlocking flooring system available in several versions, colours and ideal for most sports and activities.

**EXCELLENT
DRAINAGE**

**SMART
ACCESSORIES**

**CORRECT
BOUNCE**

**ALL-WEATHER
COURT**

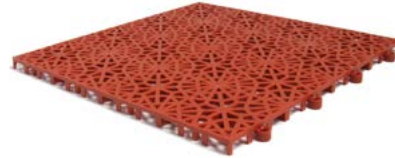
**WORKS ON CONCRETE,
ASPHALT AND EVEN
STONE POWDER**



BERGO SPORTS FLOORING



Bergo Multisport



Bergo Tennis

The unique construction will give correct resilience, bounce and friction. Bergo Multisport and Bergo Tennis offers a perforated pattern and underneath design allows excellent drainage capability, which will make the court dry quickly after rain. No puddles! The floor can stay outside in both summer and winter in any climate conditions. BERGO is according to evaluations made by Chalmers Technical University of Sweden, lenient with the players back and joints.

Easy to install

BERGO MULTISPORT and TENNIS can be installed on concrete, asphalt or almost any other hard and flat surface. Tapping a rubber mallet or similar over the protruding rings easily interlocks the tiles together. No special tools, glue or screws are needed. Use a jig- or circularsaw to cut the tiles for a perfect fit.

Accessories

The interlocking flooring system offers several practical accessories such as: Disassembly-tools, Edge-/Corner strips and Expansion strips/ Cross-pieces in matching colours.

Lines

Lines can either be created by using tiles, expansion strips or by normal painting procedure.

Disassembly-tools

The ingenious design allows for the floor to be moved quickly. The floor can easily be taken apart by using a disassembly-tool. In case one tile is damaged on the court you can change the individual tile by using a replacement-tool.

Unique ventilating design

The design with the built-in air gap allows the surface underneath to "breathe", which in turn causes the entire surface to dry up, in turn eliminating any unpleasant odours. The flooring's natural air gap insulates the surface underneath so the floor is more comfortable to walk on and dries up quickly after rain. This design, which is also profiling, provides a safe, cost-effective and practical solution.

Test results from SP (Technical Research Institute of Sweden):

Older properties with unventilated areas often have high levels of relative humidity in the concrete slabs, either through vapour diffusion or condensation on their concrete surface. This often happens in summer. These adverse conditions can cause problems with moisture and mould if material of an organic nature is stored in direct contact with the moist concrete surface. SP's tests clearly show that a Bergo floor delays the time it takes for moisture to penetrate the material placed on a Bergo floor.

Excerpts from SP's report:

"In conclusion, the Bergo tile can prevent capillary transport of both penetrating moisture through a concrete slab on the ground and condensed moisture on the surface of the concrete slab into material placed on top of Bergo tiles. They also allow for ventilation due to the air gap between the Bergo tiles and the concrete slabs."

Advantages

- Withstand all climates and environments (Multisport & Tennis)
- For indoor and outdoor use (Top Tile only for indoor)
- Easy to install and move
- Requires minimal maintenance
- Ergonomic - easy on your back and joints
- Hot/cold reducing
- Correct bounce over the complete court
- Very durable
- Excellent drainage capability (Multisport & Tennis)
- Ventilates the floor underneath
- All-weather court – dries quickly after rain (Multisport & Tennis)
- Sound absorbing characteristics
- Ideal on worn asphalt or cracked concrete.

Environment

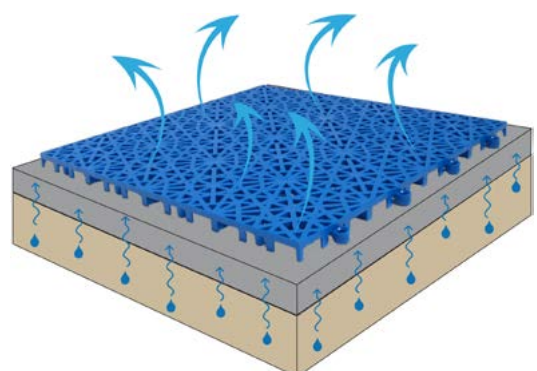
Eco-friendly production, with no harmful emissions. Production with environmentally friendly 100% recyclable materials and in our ECO-range with already recycled materials. We reduce volume of waste!

Economic

Easy to install and requires no fasteners such as nails, screws, glues, etc. The floor is longlasting, easy to move and needs minimal maintenance. Perfect for renovating old courts.

Minimal maintenance

BERGO requires virtually no maintenance. Normal floor care such as occasional wet cleaning, vacuuming and/or power hosing is usually all that is needed. The flooring system is without doubt a cost saving alternative to high maintenance floors/coatings.



bergo
FLOORING



Bergo Flooring is the OFFICIAL SUPPLIER
to the Swedish Basketball Federation.

3x3



bergo
FLOORING

BERGO MAKES PEOPLE PLAY!

The level of friction provides stop and go characteristics which are perfect for: Inline hockey, Floorball, Basketball, Soccer, Badminton, Handball, Volleyball, Netball, Floor hockey, Shooting practice area, Pad ball, Field hockey, Aerobics etc.

BERGO is also an ideal solution for on/off arrangements, such as special events, shows and exhibitions where you need to install and remove the flooring quickly. BERGO is widely used in various floorball and inline tournaments and recommended by several sport federations.



**PERFECT
FOR INLINE HOCKEY**

BERGO TENNIS – MINIMAL MAINTENANCE!

BERGO TENNIS is a well established surface, approved and classified by ITF and the Swedish Tennis Association. The excellent drainage capability / special design will give a high usage ratio and the court will bring good economy to the investor. The minimal maintenance required has been appreciated by sport clubs, communities, embassies, hotels, large companies and leisure establishments all over the world. The floor has been classified "Fast" and the unique construction gives correct resilience, bounce and friction.



bergo
FLOORING



THE OPTIMAL SPORT FLOOR THAT QUICKLY
TRANSFORMS ANY FACILITY TO A SPORTS HALL

bergo
FLOORING

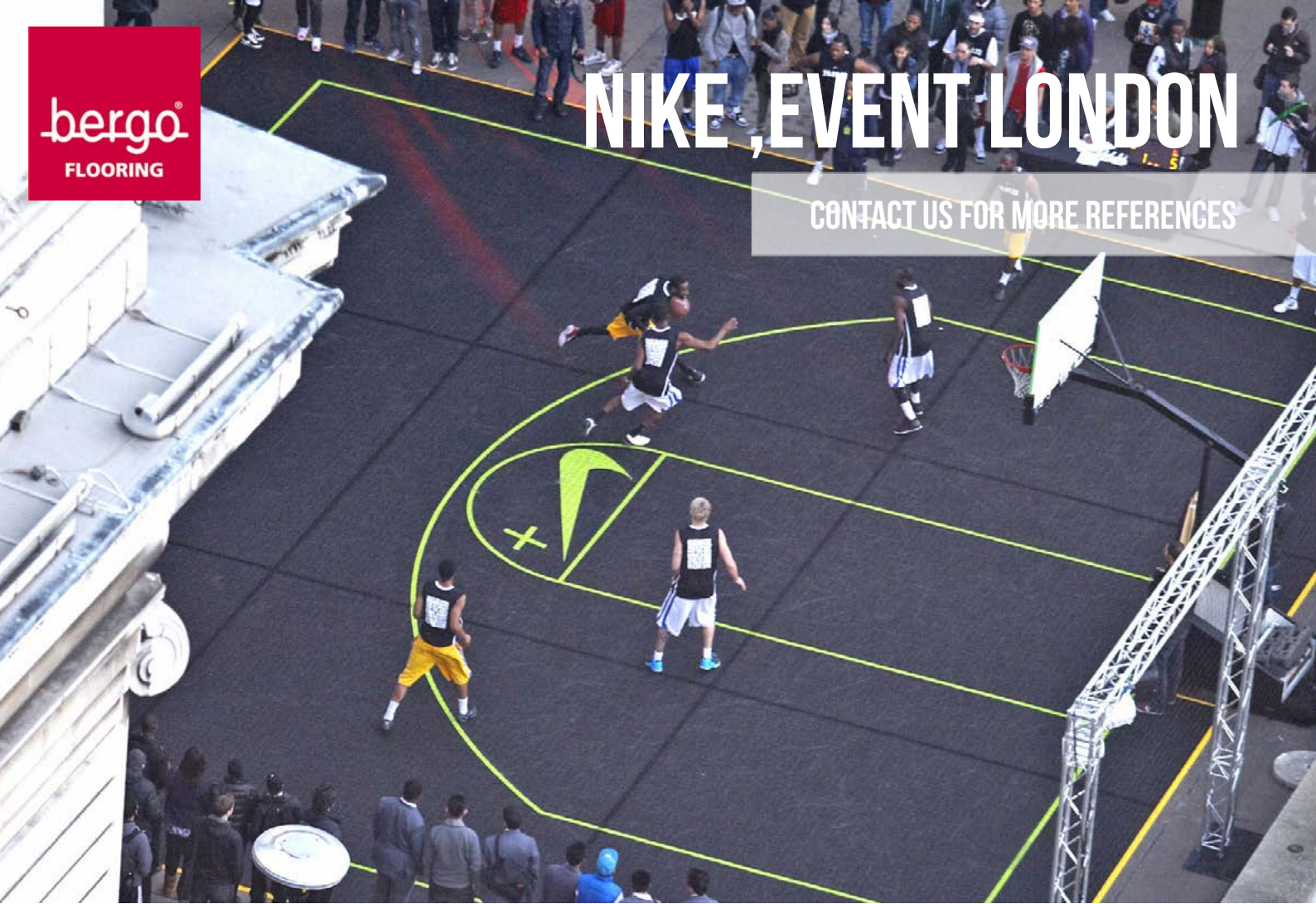
**BE A WINNER WITH YOUR
BERGO MULTISPORT FLOOR!**

NO PAINT APPLIED!

bergo
FLOORING

NIKE EVENT LONDON

CONTACT US FOR MORE REFERENCES



SHOOTING PRACTICE AREA

**BERGO MULTISPORT IS RECOMMENDED BY
THE SWEDISH FLOOR BALL FEDERATION**



bergo
FLOORING

BEFORE



AFTER



REVIEWS FROM SOME OF OUR CUSTOMERS

Read complete quotes on our web www.bergoflooring.com



“BERGO IS ACCORDING TO PLAYERS IN THE SWISS INLINE HOCKEY LEAGUE (SIHL) SUPERIOR IN THE FOLLOWING IMPORTANT CRITERIA:
SKATE CONDUCT, LEVEL OF NOISE, GRIP/BRAKING”
MANOEUVRE AND PUCK CONDUCT
/ SWISS INLINE HOCKEY LEAGUE



“WE ARE LIKewise VERY PLEASED TO BE ABLE TO RECOMMEND THE BERGO MULTISPORT PRODUCED BY BERGO FLOORING AB FOR FLOORBALL USAGE.”
/ JONAS CARLBERG, MARKETING DIRECTOR,
SWEDISH FLOORBALL FEDERATION



“WE HAVE FOUND THE BERGO SURFACE TO BE FULLY SATISFACTORY, AND WE WISH TO CONTINUE USING IT IN THE FUTURE FOR FURTHER MODERNISATION AND EXPANSION OF THE COMPLEX.”
/ JI Í KNÍŽEK, MA. OWNER OF TENNIS CLUB,
TK LOB, PRAHA-BOHNICE



“THE RESULT WAS EXCELLENT AND THE FLOOR HAS PLAYED A BIG PART IN INCREASING THE LEVEL OF ACTIVITY AT THE SITE.”
/ KENT KRUISE, LEISURE MANAGER,
GISLAVED MUNICIPALITY



“I WAS OVERWHELMED BY THE SERVICE FROM BERGO, AND WERE FULL OF SUGGESTIONS AND IDEAS ABOUT HOW I COULD USE EXPANSION STRIPS FOR THE LINES AND SO ON. THEY SENT PICTURES OF SIMILAR PROJECTS AND EVEN SOME SAMPLE TILES, SO I COULD GET AN IDEA OF WHAT IT WOULD BE LIKE.”
/ MICHAEL ROSENGREN, PRIVATE BASKET COURT,
EKLANDA, SWEDEN



“WE HAD A PROBLEM WITH DAMP IN THE PREMISES, SO FOR US USING BERGO WAS BIT OF A “RESCUE”, BOTH FROM A FUNCTIONAL AND AN ECONOMIC PERSPECTIVE. THERE IS GOOD RESILIENCE IN THE FLOOR AND IT WAS SIMPLE AND REALLY FUN TO INSTALL. THE TILES WERE LAID DIRECTLY ONTO THE CONCRETE FLOOR; WHICH WORKED WELL DESPITE IRREGULARITIES. WE ARE PLEASED AND CAN HIGHLY RECOMMEND THE BERGO TILES.”
/ DANIEL NASH, HEAD COACH, IF LINNÉA BOXING

ECO TENNIS & ECO MULTISPORT

ANOTHER STEP IN OUR COMMITMENT TO THE ENVIRONMENT.

Helping to reduce mountains of waste, Bergo Flooring takes the success of the ECO-series further. Bergo launches ECO Tennis and ECO Multisport, made of 100% recycled materials. The ECO range IS available in several attractive colors.

Our flooring is also 100% recyclable in the next step, and in the next, and can finally be

used in district heating plants for warming up our homes, without environmentally harmful emissions.

Bergo ECO Tennis and Bergo Multisport has the same characteristics as Bergo Tennis and Bergo Multisport.



“AFTER YEARS OF DEVELOPMENT WITH LEADING RECYCLING COMPANIES, WE HAVE SUCCEEDED IN PRODUCING A MATERIAL WHICH HOLDS THE SAME HIGH QUALITY AS OUR OTHER MULTIFUNCTIONAL COMPOSITE FLOORING, AND WHICH ALSO CAN BE PRODUCED IN MANY ATTRACTIVE BRIGHT COLORS, THAT MAKES US UNIQUE.”



**100%
RECYCLED
COMPOSITE**





**FAST,
ECONOMICAL
SOLUTION!**



BERGO MULTISPORT

Bergo multisport and Bergo Tennis are ideal all weather floors which provides a solution for permanent installations indoor and outdoor as well as for temporary events and trade shows where you need to install and move the floor.

BERGO MULTISPORT and ECO MULTISPORT has a smooth surface.



	ISO2076	Environmentally friendly recyclable UV-stabilized PP-composite.
	EN427	303,3 x 303,3 mm.
	EN428	14,1 mm.
	EN430	1 tile: 0,356 kg.
	QUALIFIED TEST BY BERGO	700 ton / 1 m ² = 7000 kg/dm ²
	EN 14836 (>3)	4-5
	ISO 105-B02 (1-8)	7-8
	ISO 105-A02	4/5
	ASTM D1435	4/5
	ASTM G154 Cycle A	4/5
	EN13036-4	Dry: 108 PTV
	SS EN-13893	>0,4 = corresponds to R10
	ISO179/1eA	+23 °C = 20 kJ/m ² / -20 °C = 5 kJ/m ²
	ASTM D746	C15 kJ/m ²
	EN ISO 11925-2	E _{fl}
	EN 14041	0402-CPD-P605080A

Shock absorption:	EN 14877	EN 14808	6 %
Vertical deformation:	EN 14877	EN 14809	0,3 mm
Vertical ball behaviour:	EN 14877	EN 12235	98 %
Resistance to wear:	EN 14877	EN ISO 5470-1	0,1 g / 1000 cycles
Water infiltration rate:	EN 14877	EN 12616	Requirement very well achieved.

Results with underlayment:

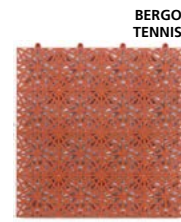
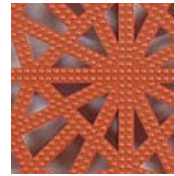
	Results	FIBA* requirements	Pass/Fail	
Friction:	EN 13036-4	97	80-110	Pass
Shock absorption:	EN 14808	29 %	≥ 25	Pass
Vertical deformation:	EN 14809	2,3 mm	≤ 3,5	Pass
Vertical ball rebound:	EN 12235	97 %	≥ 90	Pass

* FIBA requirements for levels 2 and 3: Mobile synthetic flooring



BERGO TENNIS

BERGO TENNIS and ECO TENNIS has a surface with knobs.



	ISO2076	Environmentally friendly recyclable UV-stabilized PP-composite.
	EN427	301,6 x 301,6 mm.
	EN428	13,3 mm.
	EN430	1 tile: 0,3 kg.
	QUALIFIED TEST BY BERGO	800 ton / 1 m ² = 8000 kg/dm ²
	EN 14836 (>3)	4-5
	ISO 105-B02 (1-8)	7-8
	ISO 105-A02	4/5
	ASTM D1435	4/5
	ASTM G154 Cycle A	4/5
	EN13036-4	Dry: 96 PTV
	SS EN-13893	>0,4
	ISO179/1eA	+23 °C = 20 kJ/m ² / -20 °C = 5 kJ/m ²
	ASTM D746	C15 kJ/m ²
	EN ISO 11925-2	E _{fl}
	EN 14041	0402-CPD-P605080A

Shock absorption:	EN 14808	6 %
Vertical deformation:	EN 14809	0,3 mm
Vertical ball behaviour:	EN 12235	98 %
Resistance to wear:	EN ISO 5470-1	0,1 g / 1000 cycles
Water infiltration rate:	EN 12616	Requirement very well achieved.



Bergo Tennis gives the right bounce over the whole track. 11° angle of incidence gives a 13° angle of the ball.



ACCESSORIES FOR BERGO MULTISPORT AND TENNIS

Our accessories are needed for the court to work. They can also be used to make lines and for decoration. It is possible to paint the lines and logos on the floor with a suitable paint.

EDGE STRIP
300 x 55 mm

CORNER STRIP
55 x 55 mm

EXPANSION EDGE PICE
75 X 52 MM

EXPANSION STRIP LONG
300 x 75 mm

EXPANSION STRIP SHORT
150 x 75 mm

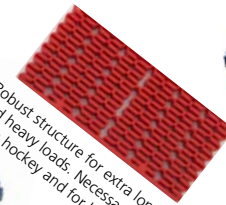
EXPANSION CROSS-PIECE
55 x 55 mm

DISASSEMBLY TOOL
PROFESSIONAL WITH SHAFT

SINGLE TILE REPLACEMENT
TOOL



For sports that causes less strain, such as basketball, handball, volleyball, etc.



Robust structure for extra long life and heavy loads. Necessary for inline hockey and for heavy wear.



By using Bergo Edge strips and corner strips you will give the floor an attractive design.

Expansion Edge is used together with the Edge strips as practical and attractive ending of a row with Expansion strips.

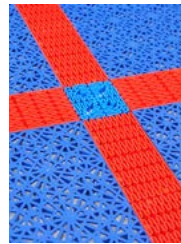
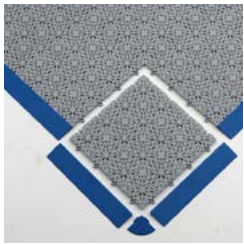
Expansion strip allow expansion of the floor material in varying temperature changes. The Expansion strips can at the same time function as lines on the court.

Expansion Cross-piece are used as two lines of the Expansion Strips intersect with each other.

Lines and logos can also be painted!

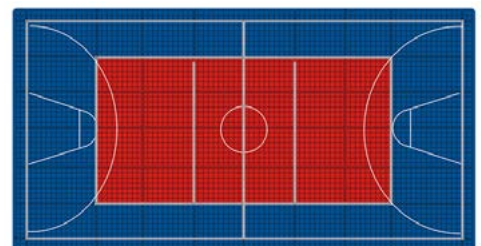
Bergo Disassembly Tool Professional is for larger installations, for mobile applications that can quickly and easily be able to dismantle The Bergo Floor.

In case one tile is damaged one can change the individual tile by using Bergo Single Tile Replacement Tool.



INSTALLATION

Bergo flooring is easy to lay and can be placed on an existing surfaces without fasteners such as glue, screws or nails. Bergo Sports Flooring Tiles can as an option be supplied as pre-assembled sheets (3 x 4 tiles) or/and as single tiles (5 m²/box), which means that the floor can be laid very quickly. We offer complete systems including court markings, etc. Contact us for more details.



une solution universelle

www.bergoflooring.com

1.2



OUR BUSINESS AREAS



Bergo Flooring AB
P.O. Box 10
SE-334 21 Anderstorp
Sweden
+46 371 58 77 00
info@flooring.se
www.bergoflooring.com